

Connecting to the TCU Personal Wireless Network on Windows 8

WARNING:

- Support for personal devices is limited since TCU does not own or manage the equipment. See the [TCU BYOD Policy](#) for more information.
- We do not recommend that you take a TCU owned device off FSWPA2 and connect to TCU Personal network. You may lose access to several highly secure systems by doing so.

Connecting to TCU Personal

1. Go to the wireless connection icon in the menu bar and view the available networks. **Warning:** If it shows that you are connected to any other wireless network, it must be removed before you proceed. Right-click on those networks and select **Disconnect** before moving to the next step.

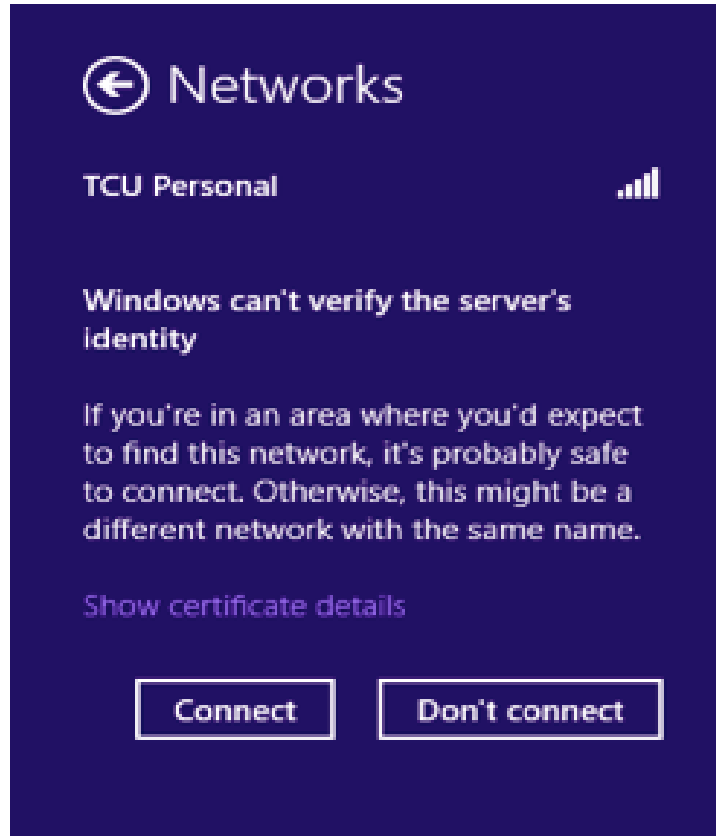


2. Select the TCU Personal network and click **Connect**.

3. Enter your TCU username and password at the prompt.

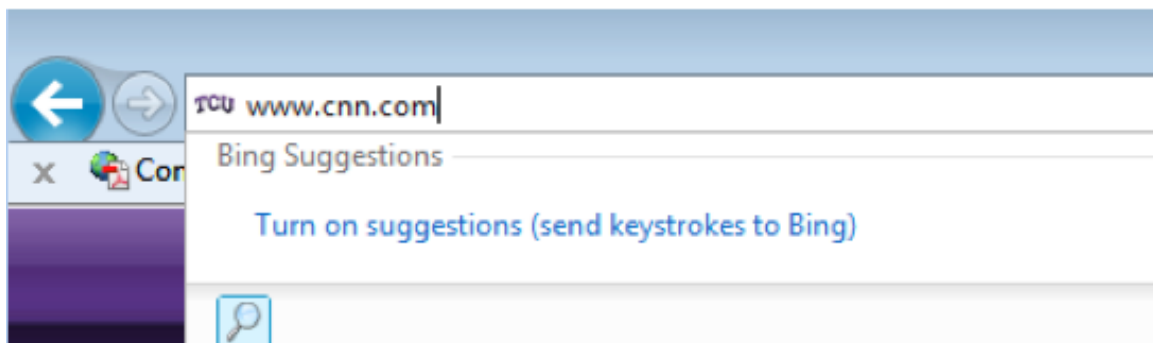
A screenshot of the Windows 8 'Networks' dialog box. The title bar says '← Networks'. Below the title, it says 'TCU Personal' with a Wi-Fi signal strength icon to its right. The main text reads 'Enter your user name and password'. There is a checkbox labeled 'Use my Windows user account' which is currently unchecked. Below this are two text input fields: 'User name' and 'Password'. At the bottom, there are two buttons: 'OK' and 'Cancel'.

4. You may get the following warning. Click **Connect**.



5. You will get a notification that you are connected. Go ahead and open up a web browser like Internet Explorer or FireFox.

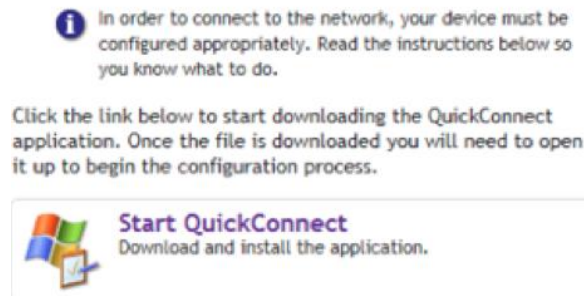
6. Once a web browser is open, go to a non-TCU or non-Google website. Try using www.cnn.com and make sure to enter the full address so it doesn't try to do a Google search with a partial address.



7. Login using your **TCU Username** and **Password**.



8. Click the **Start QuickConnect** button to begin the download process.



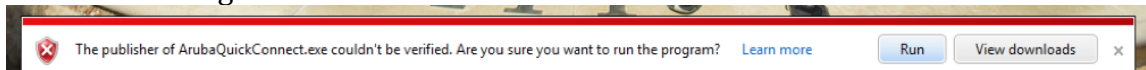
9. Run/Open the file that you just downloaded. **NOTE: Each browser will treat your downloads differently. In this example we are using Internet Explorer.**

If you are running Firefox, Safari, or Chrome you can just go to your downloads location, double-click on the file, and skip to Step 12.

10. Click **Run**.



11. Click **Run** again.

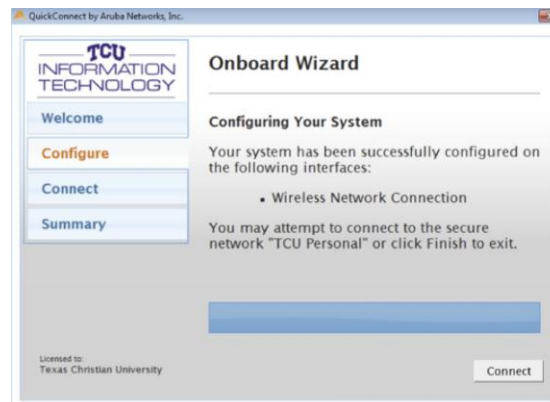


12. Click **Yes** to begin the setup process.

13. Click the **Next** button.



14. Click the **Connect** button to complete the setup process.



15. Click the **Close** button. You are ready to use the TCU Personal network.

