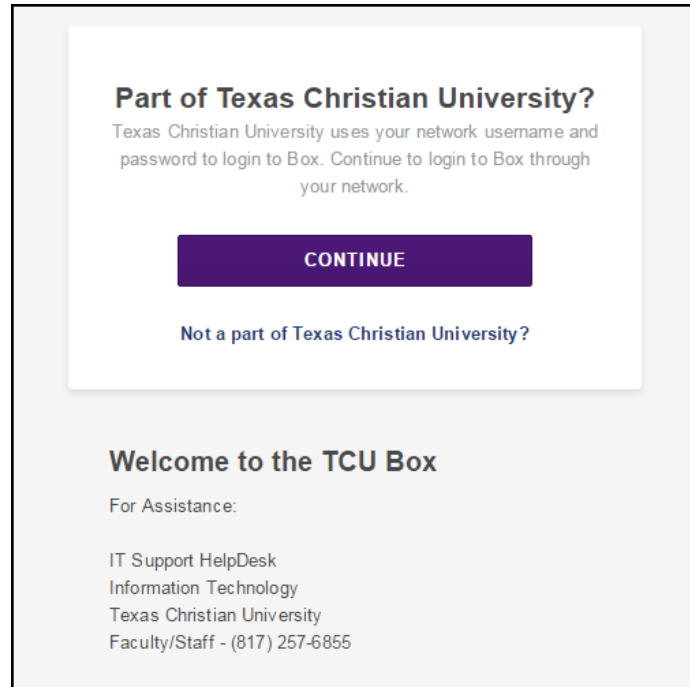


Box Sync Installation for Windows

1. Open browser to page: <http://tcu.box.com> and click **Continue**.



Part of Texas Christian University?
Texas Christian University uses your network username and password to login to Box. Continue to login to Box through your network.

CONTINUE

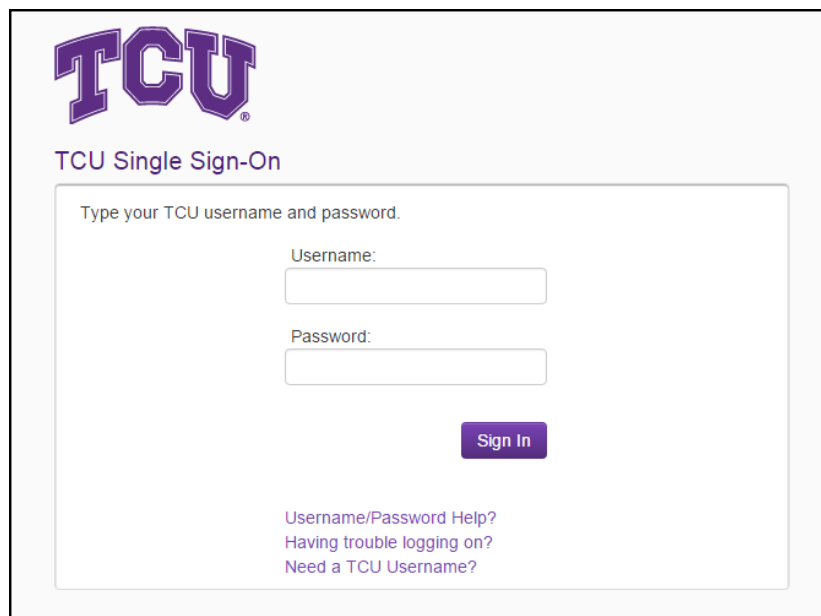
Not a part of Texas Christian University?

Welcome to the TCU Box

For Assistance:

IT Support HelpDesk
Information Technology
Texas Christian University
Faculty/Staff - (817) 257-6855

2. Login using your **TCU username** and **password**.



TCU

TCU Single Sign-On

Type your TCU username and password.

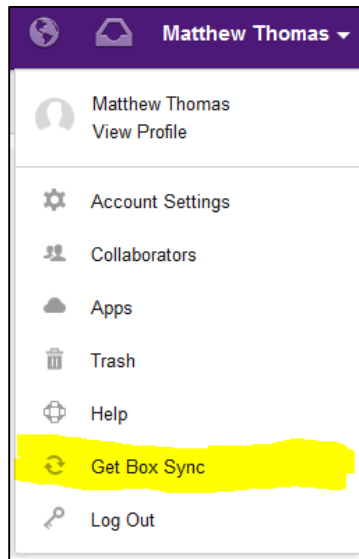
Username:

Password:

Sign In

[Username/Password Help?](#)
[Having trouble logging on?](#)
[Need a TCU Username?](#)

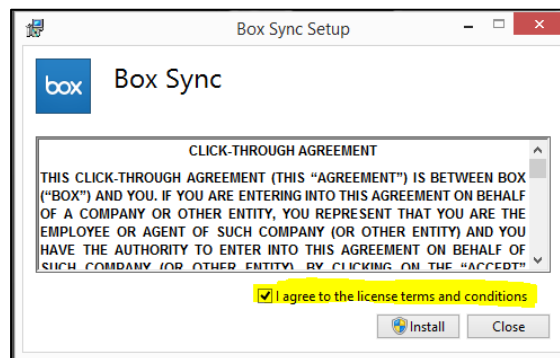
3. Click your name in the top right corner of the browser and select **Get Box Sync**.



4. Click **Box Sync** button and click Run to begin the installation.

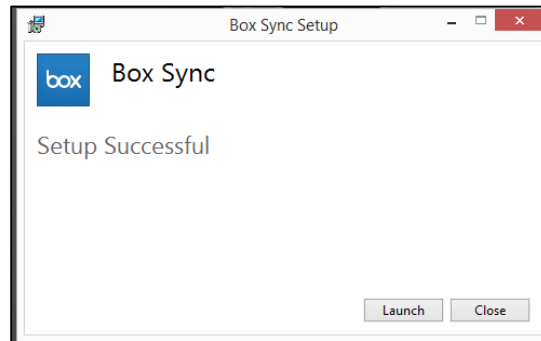


5. Agree to the terms and click **Install**

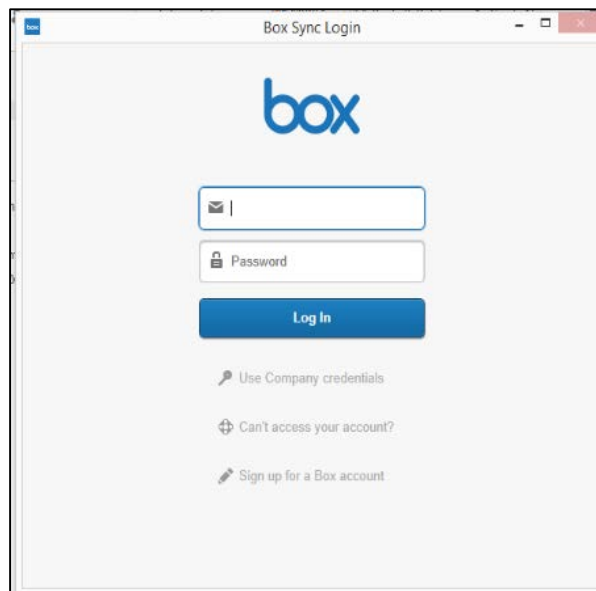


6. Click **Yes** to the UAC message.

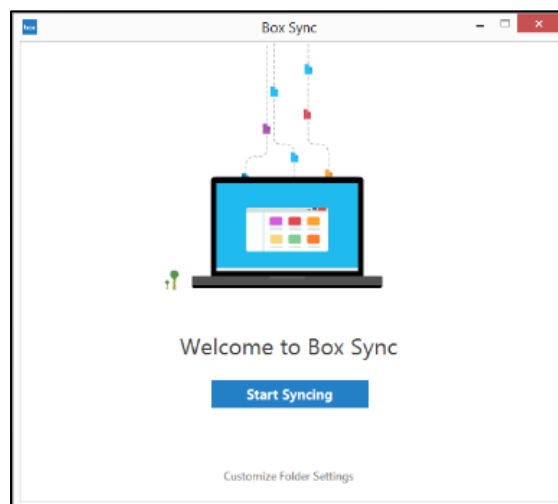
7. Click **Launch**.



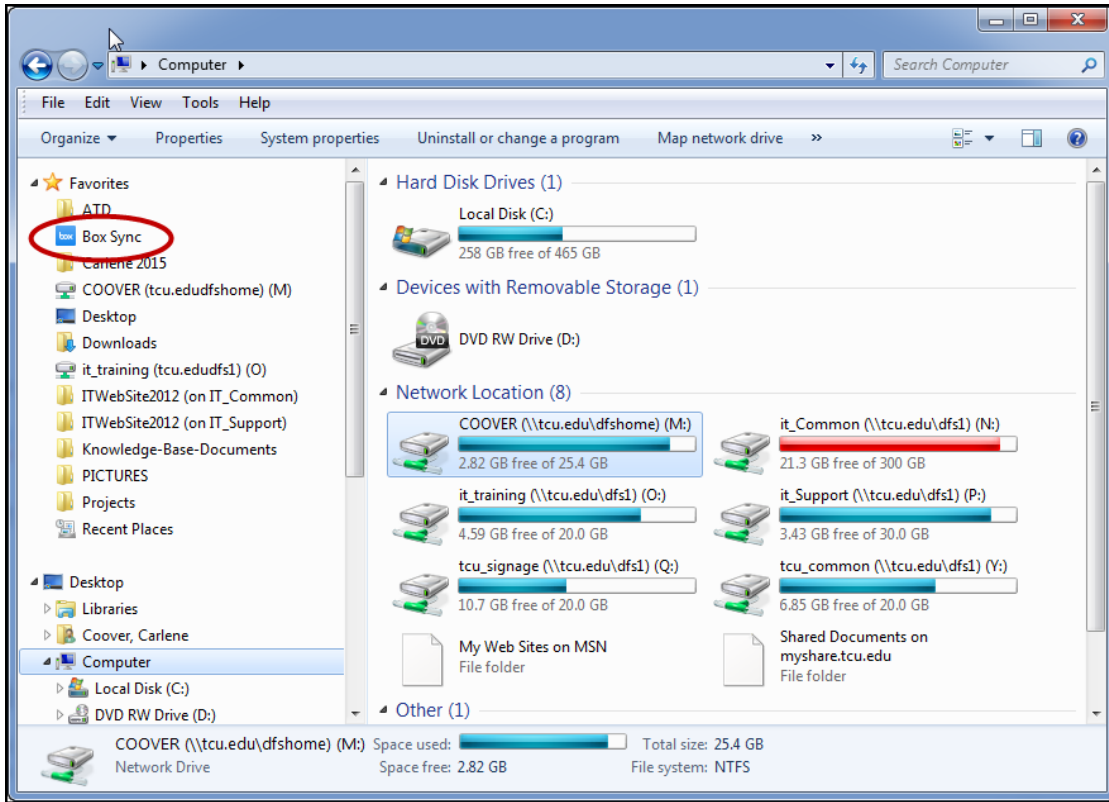
8. Login with your **TCU** username and **password**.



9. Click **Start Syncing**.



The Box icon will now appear in File Explorer **Favorites**.



The Box icon will also be visible in the taskbar **System Tray** located on the lower right side of the screen.

